

Increasing Health Equity



Live Well Lake County

December 3rd, 2015

Remembering October's field observation opportunity...





The Influence of the Health of the Community Upon the Health of the Individual



1 Neighborhood feel

1 2 3 4 5 6 7 8 9 10 11 12 13 14 15 16 17 18 19 20

**Buildings with boarded/
broken windows**

**Excessive litter in street/
sidewalk/yards**

**Liquor Stores
Gaming/Casino
store fronts**

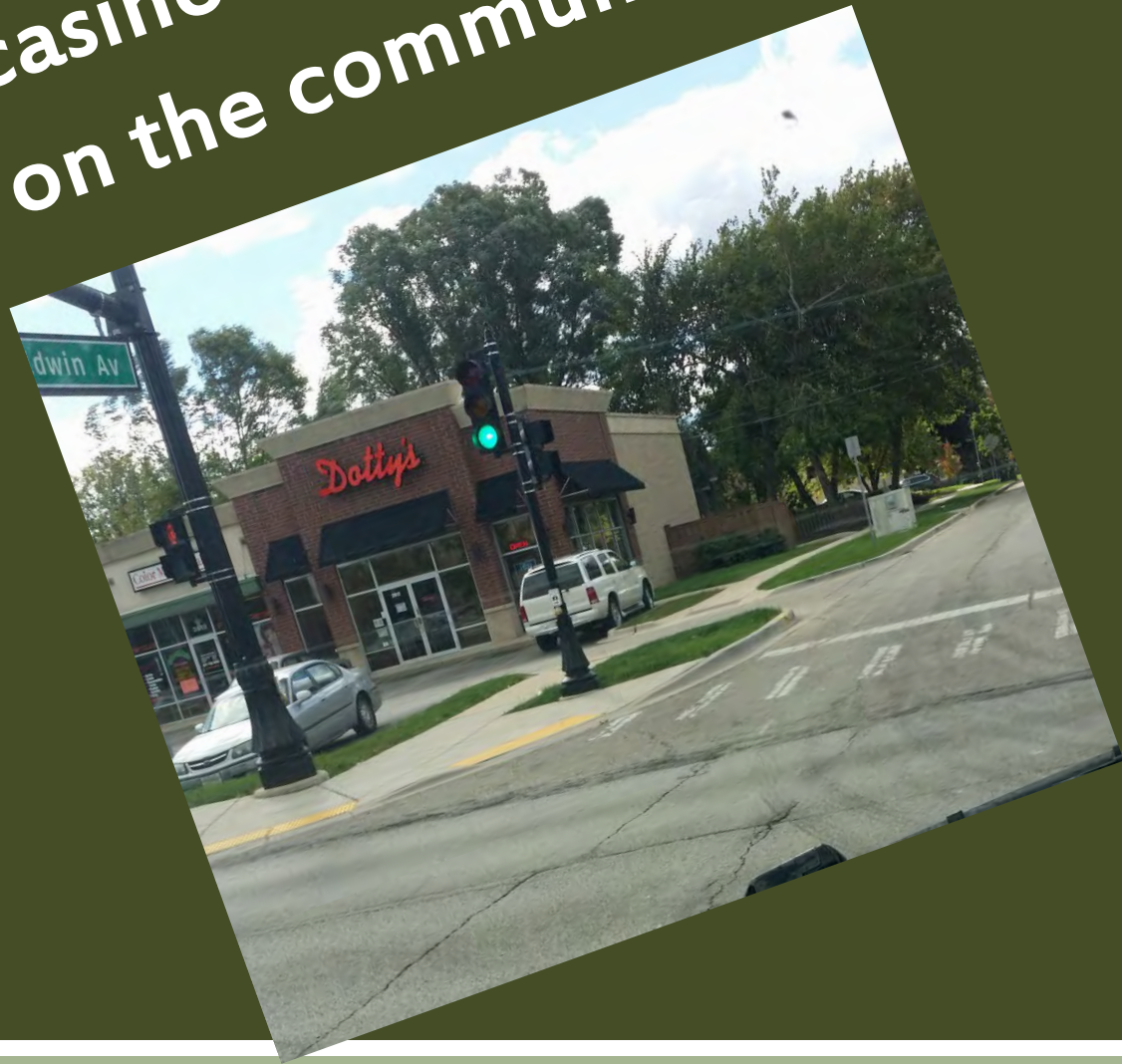
**Alcohol and Tobacco
Billboards/Ads**

**Loans/Pay-Day Cash/
Pawn Shops**

Fast Food

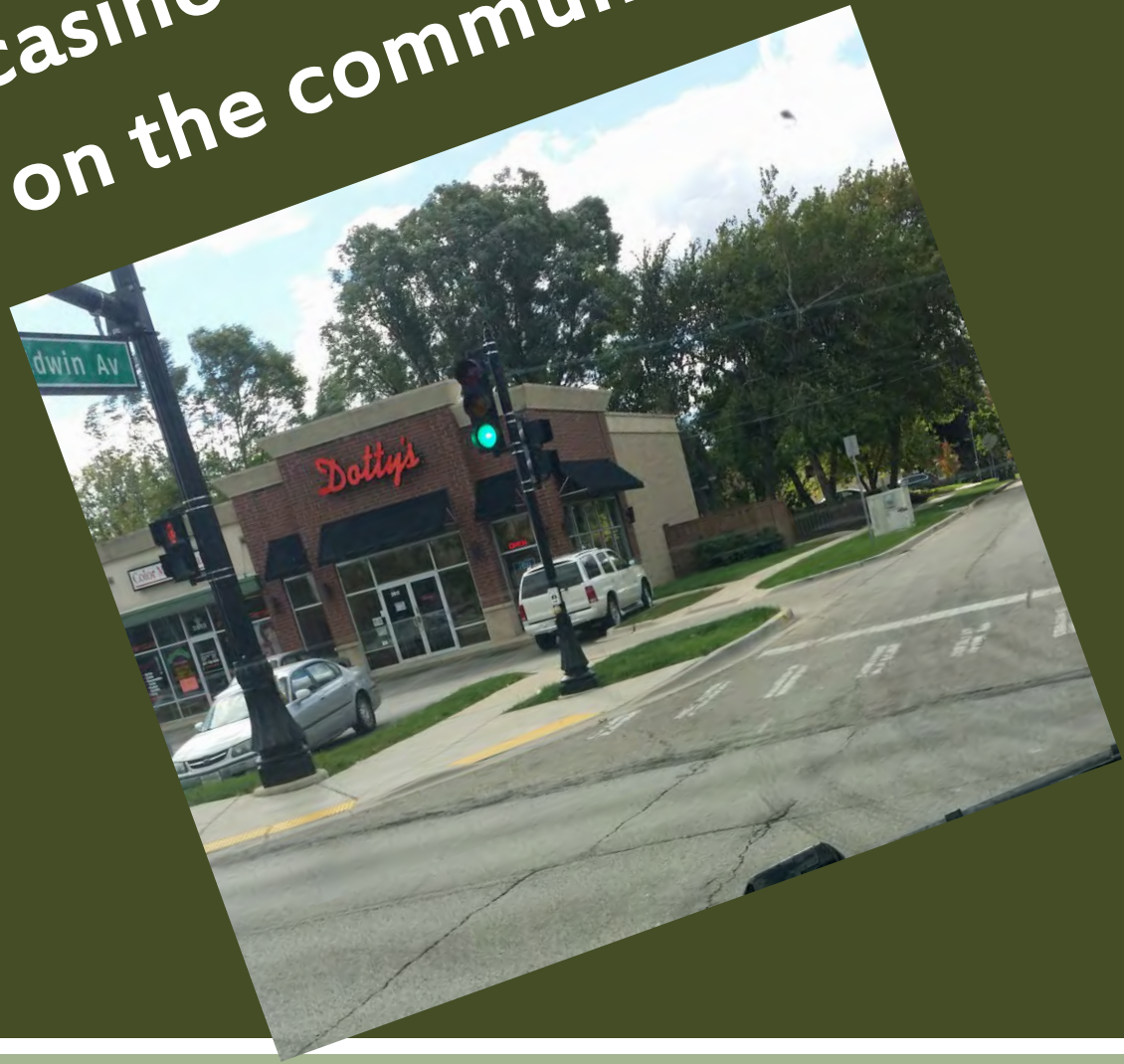


What impact do casino storefronts have on the community?



What impact do casino storefronts have on the community?

Is this an issue
In any of our
Communities?



What do you remember about Greenbelt?



What do you remember about Greenbelt?



What do you remember about Greenbelt?



Then, we drove one mile to the east...



Then, we drove one mile to the east...



What do you remember about
this part of our trip?



What do you remember about
this part of our trip?



How close we were to very familiar territory...



What difference do abandoned lots and boarded up schools make to a community?

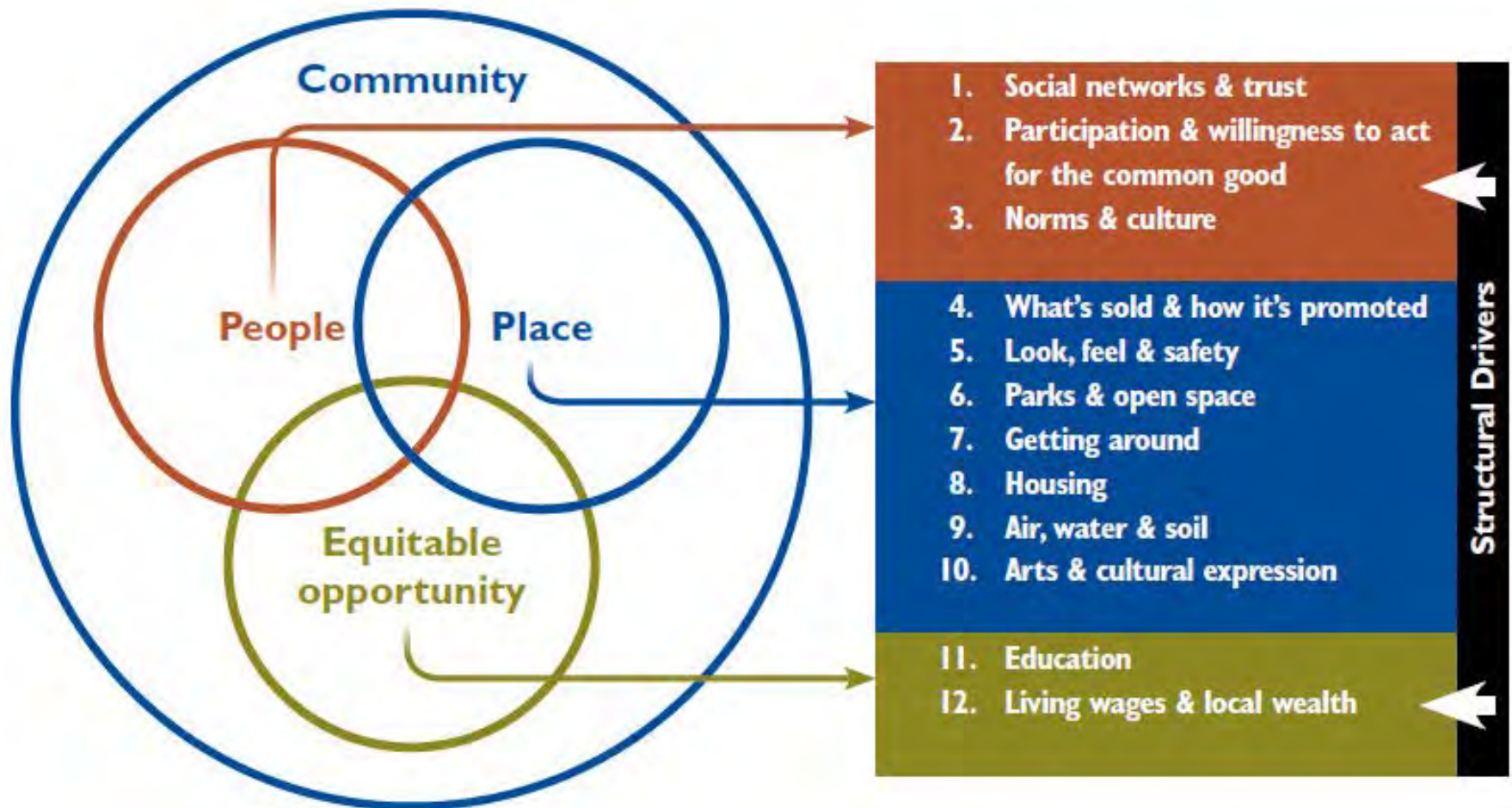




**What difference do
abandoned lots and
boarded up schools
make to a community?**

THRIVE Clusters and Factors

Community Determinants

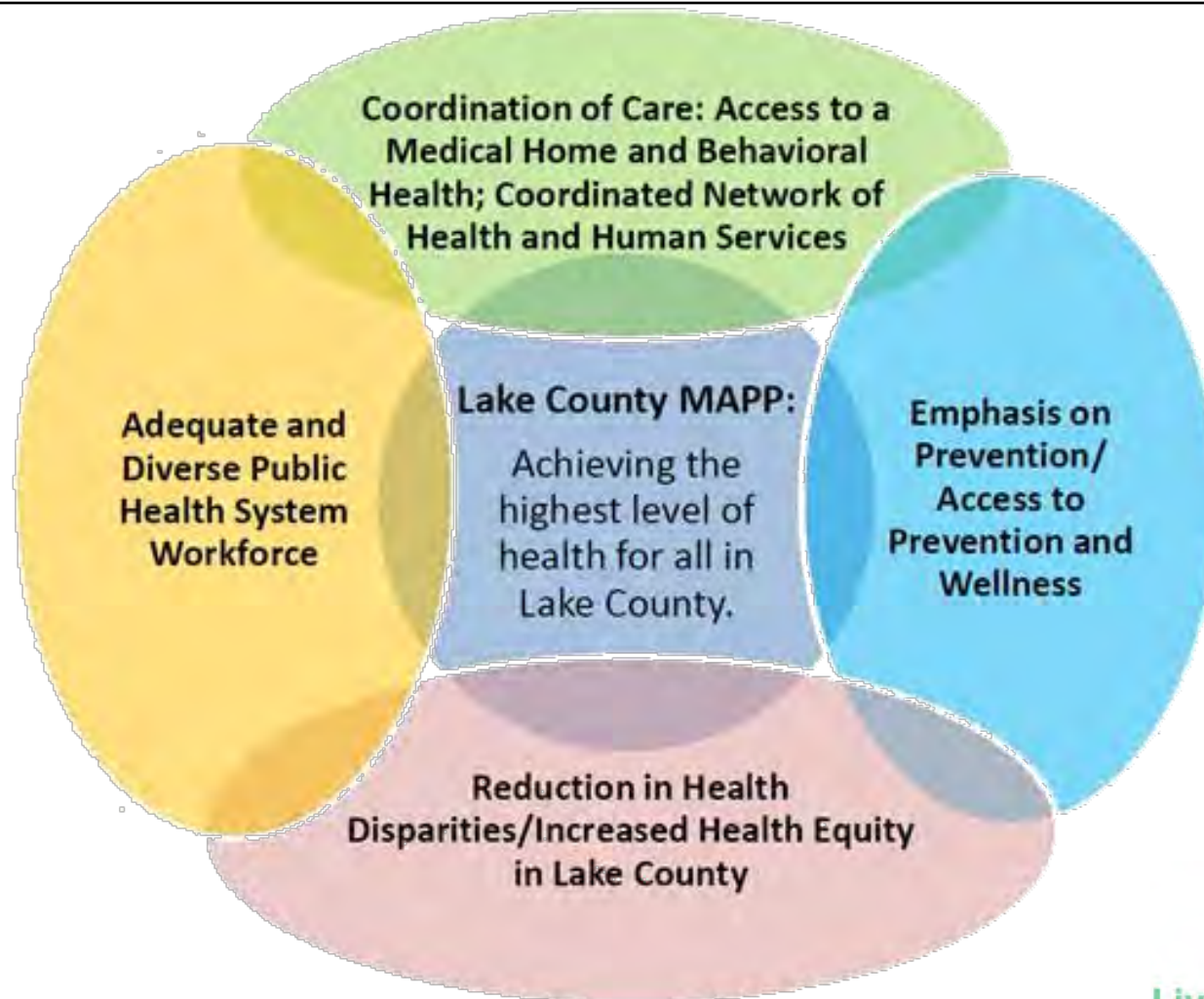


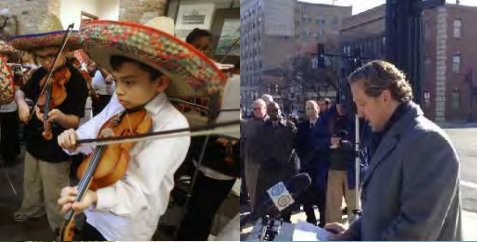
Social Determinants of Health





Lake County's Strategic Priorities





Policy
Makers



Healthy
Children



Access to
Care



Housing



Spiritual
Vitality



Jobs



Healthy
Food



Our Vision: Health Equity

Everyone in Lake County,

*no matter who you are, where you live,
how much money you make, or your family heritage,
has the opportunity to live in a healthy environment and
to lead a healthful, fulfilling, and productive life.*

Environmental
Quality



Education



Economic
Opportunities
for All



Parks and
Activities



Safe
Neighbor-
hoods



Community



Transpor-
tation



Basic Definition

Health Equity

“every person has the opportunity to achieve their full capabilities and potential for health and well-being”.

-NACCHO, 2015, Sen, 2004



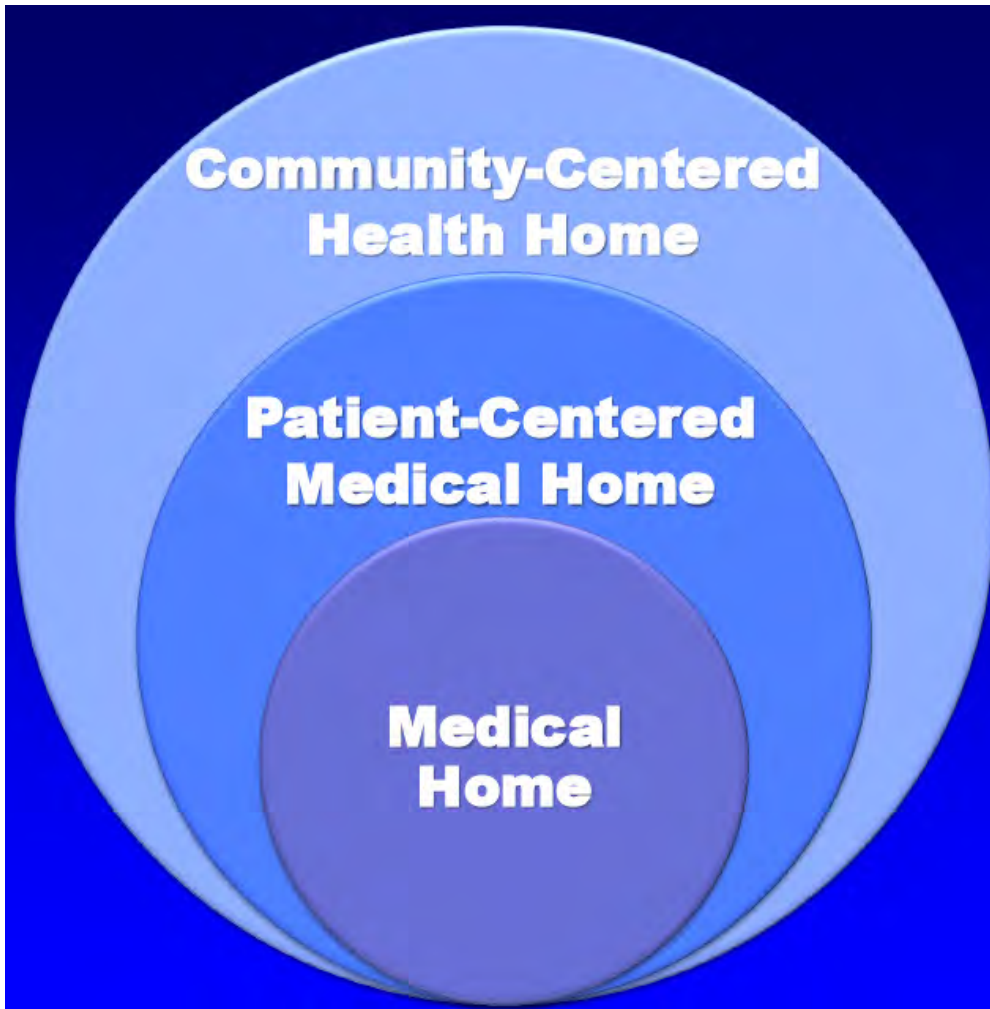


Human Interactions with the Biosphere and Creation of the Built Environment

Eusocial



CCHH Model



The defining attribute of the CCHH model is active involvement in community advocacy and systems change. A CCHH not only *acknowledges* that factors outside the health care system affect patient health outcomes, but *actively participates* in improving them.

Institute for Healthcare Improvement:
Triple Aim

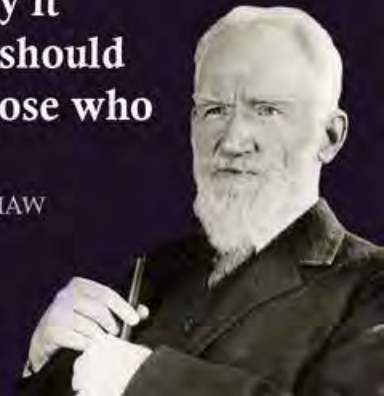
- Improving the patient experience of care (including quality and satisfaction)
- Improving the health of populations
- Reducing the per capita cost of health care

CCHH Self-Assessment



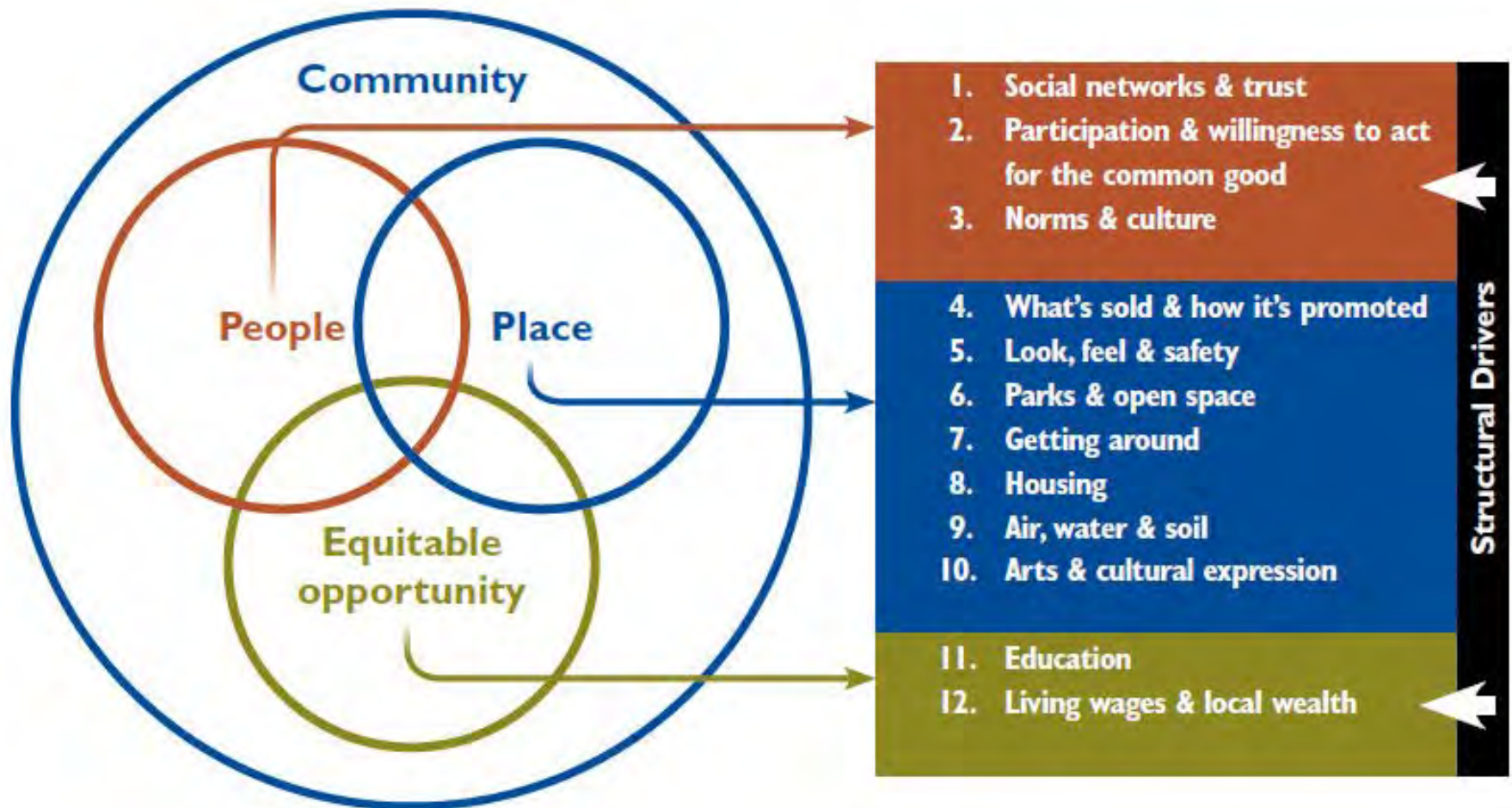
**“People who say it
cannot be done should
not interrupt those who
are doing it.”**

-GEORGE BERNARD SHAW



THRIVE Clusters and Factors

Community Determinants



A Trajectory of Health Inequity



A Trajectory of Health Equity



A Special Message from Larry Cohen

What Do You See is Your Role?

