



LIFE HIKE

HEALTH ON THE MOVE

LIVE IN A SAFE COMMUNITY

- Aim4Peace violence prevention
- disease investigators
- lead removal
- daycare & food inspections

YOUR HOME IS HEALTHY AND IN GOOD UPKEEP

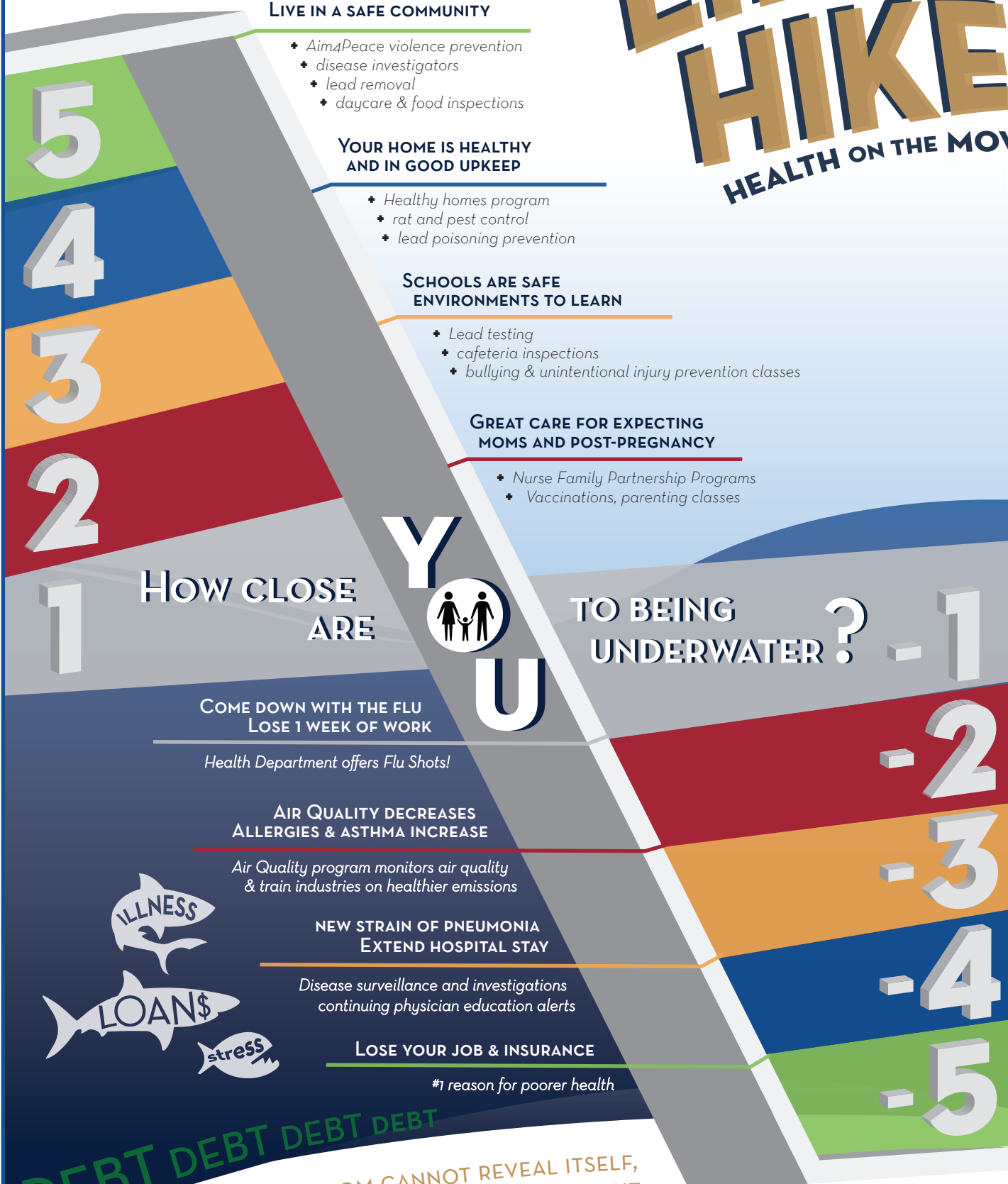
- Healthy homes program
- rat and pest control
- lead poisoning prevention

SCHOOLS ARE SAFE ENVIRONMENTS TO LEARN

- Lead testing
- cafeteria inspections
- bullying & unintentional injury prevention classes

GREAT CARE FOR EXPECTING MOMS AND POST-PREGNANCY

- Nurse Family Partnership Programs
- Vaccinations, parenting classes



How CLOSE ARE



TO BEING UNDERWATER? -1

COME DOWN WITH THE FLU
LOSE 1 WEEK OF WORK

Health Department offers Flu Shots!

AIR QUALITY DECREASES
ALLERGIES & ASTHMA INCREASE

Air Quality program monitors air quality
& train industries on healthier emissions

NEW STRAIN OF PNEUMONIA
EXTEND HOSPITAL STAY

Disease surveillance and investigations
continuing physician education alerts

LOSE YOUR JOB & INSURANCE

#1 reason for poorer health

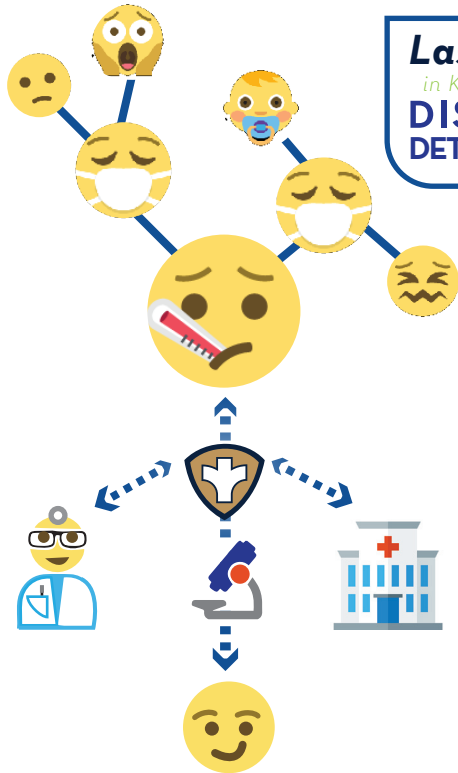


DEBT DEBT DEBT DEBT

WHEN HEALTH IS ABSENT, WISDOM CANNOT REVEAL ITSELF,
ART CANNOT MANIFEST, STRENGTH CANNOT FIGHT,
WEALTH BECOMES USELESS, AND INTELLIGENCE CANNOT BE APPLIED.

What is a **DISEASE DETECTIVE?**

KCMO Health Department disease detectives investigate and use what they've learned to prevent others from getting sick. They communicate crucial information rapidly about health problems in the city. Their work prevents illness, gets to the root of health problems and helps people cope in different situations. However, there are not enough disease detectives to fully protect the city.



Last year
in Kansas City
DISEASE DETECTIVES



Inspected over
5,000
Restaurants

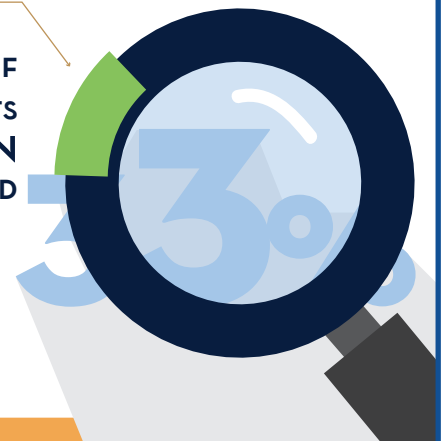


Broke cycles
of violence
205
Times



Received over
8,000
Communicable
Disease Reports

IN 2015, ONLY **33%** OF
COMMUNICABLE DISEASE REPORTS
THAT NEEDED ATTENTION
WERE ABLE TO BE INVESTIGATED



More disease detectives means more investigations of communicable disease, more restaurants, daycare centers, & pools inspected in a timely manner & more injury & violence intervention to help keep our community healthy & safe.

FROM 2010-2014,

LOW BIRTH WEIGHT WAS A MAJOR CONTRIBUTOR TOWARDS
INFANT DEATHS IN KANSAS CITY MISSOURI.

Our maternal & child health specialists are the front line workers protecting our moms & babies.



65% of infants
who died before their
1st birthday had a low
birth weight.

8.5% of all
live births in KCMO
involved babies with
a low birth weight.

**Estimated \$9.56 return on investment to society for every dollar
invested in our maternal child health workforce**

Nurse Family Partnerships, "Outcomes, Costs, & Return on Investment in New York." 2014